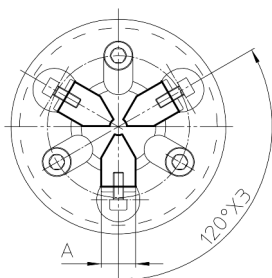
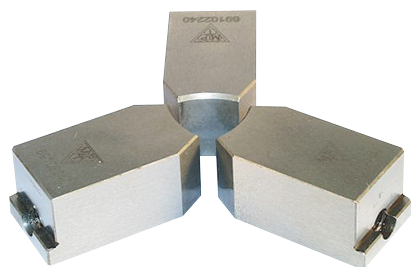


ACS-E

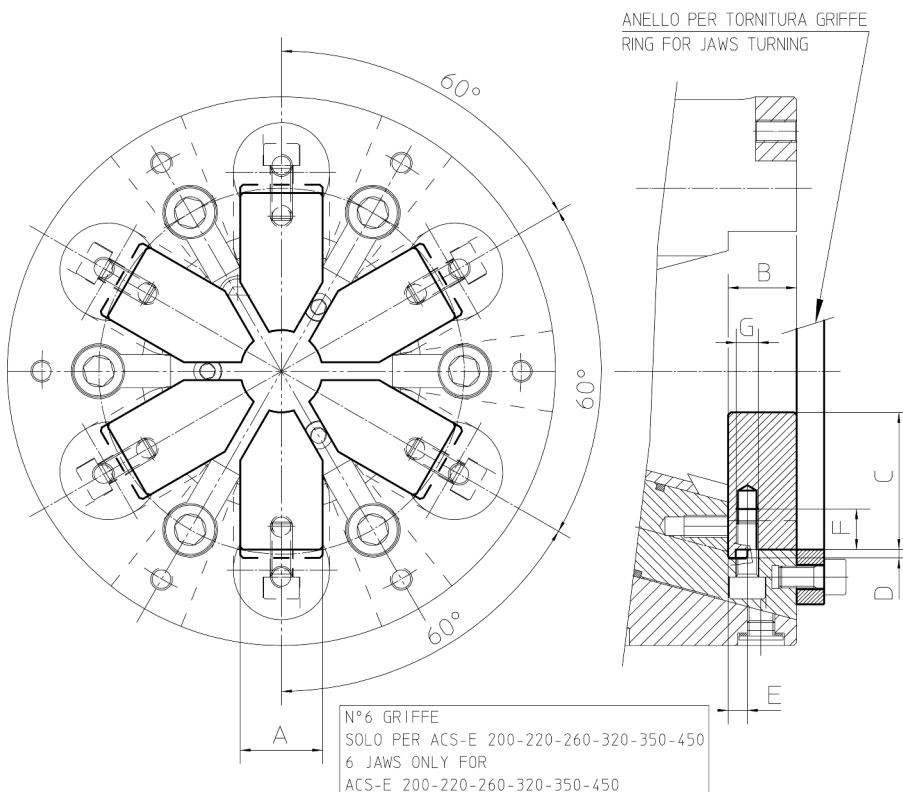
Morsetti duri per autocentranti a 3-6 colonne staffanti

Hard jaws for 3-6 pull-down column chucks

- Bloccaggio DIAMETRI ESTERNI
- *OUTSIDE DIAMETERS clamping*



N°3 GRIFFE
PER ACS-E 110÷350
3 JAWS FOR
ACS-E 110÷350



N°6 GRIFFE
SOLO PER ACS-E 200-220-260-320-350-450
6 JAWS ONLY FOR
ACS-E 200-220-260-320-350-450

Soggetto a cambiamenti tecnici - *Subject to technical changes*

Materiale morsetti duri: acciaio tutta temprata HRC 56-58
Hard jaws stuff: completely hardened steel HRC 56-58

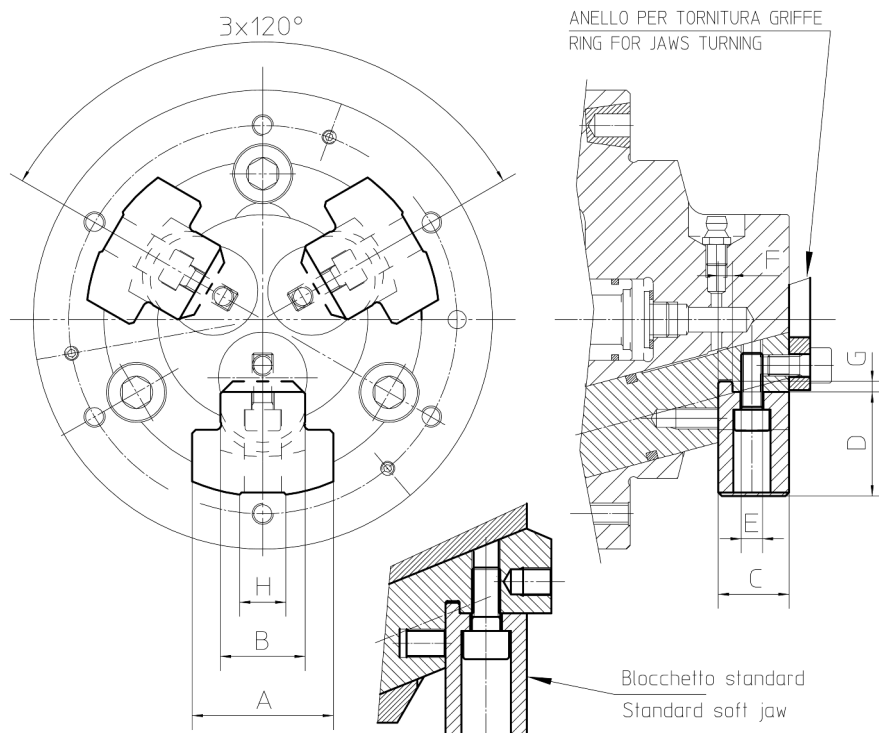
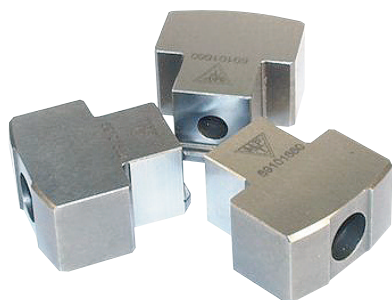
MPT tipo ACS-E ACS-E MPT type		110	130	145	170	200	220	260	320	350	450
Numero colonne - Columns number		3	3	3	3	3-6	3-6	3-6	3-6	3-6	6
A h6		18	20	20	20	30	30	30	30	30	30
	B	18	20	20	20	25	25	25	25	25	25
	C	29.5	30	35	40	50	50	50	75	75	75
	D	3	3	3	3	3	3	3	3	3	3
	E g6	5	6	6	6	7	7	7	7	7	7
	F	13	13	13	13	15	15	15	15	15	15
	G	M6	M6	M6	M6	M8	M8	M8	M8	M8	M8
Diametri di bloccaggio consigliati <i>Recommended clamping diameters</i>	min	4	10	20	30	30	50	90	90	120	208
	max	45	50	70	95	100	125	165	215	245	335

Codice set di 3 morsetti duri <i>Set of 3 hard jaws code</i>	69761110	69761310	69761410	69761710	69762010	69762210	69763210	-		
Codice set di 6 morsetti duri <i>Set of 6 hard jaws code</i>	-	-	-	-	-	-	-	-		
Codice anello tornitura griffe <i>Ring for jaws centering code</i>	69111110	69111310	69111410	69111710	69112040	69112240	69112540	69113240	69113540	69114540

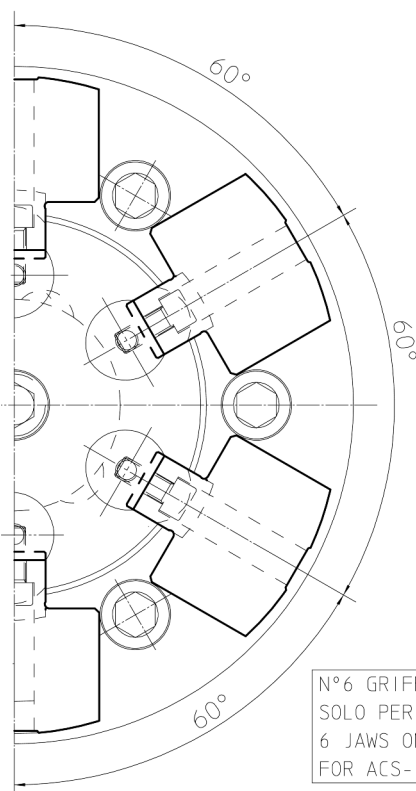
ACS-I

Morsetti duri per autocentranti a 3-6 colonne staffanti Hard jaws for 3-6 pull-down column chucks

- Bloccaggio DIAMETRI INTERNI
INSIDE DIAMETERS clamping



Soggetto a cambiamenti tecnici - Subject to technical changes



N°6 GRIFFE
SOLO PER ACS-I 240-300
6 JAWS ONLY
FOR ACS-I 240-300

Prima o dopo la tornitura si consiglia di eseguire uno scarico centrale (H) sulla griffa in corrispondenza della vite (come da figura).
Materiale morsetti duri: acciaio tutta tempra HRC 56-58

Before and after the turning we recommend cutting a central relief (H) on the jaw corresponding to the bolt (see figure).
Hard jaws stuff: completely hardened steel HRC 56-58

Morsetti per colonne standard. Per colonne lunghe si possono utilizzare i bloccetti standard oppure su richiesta bloccetti speciali.

Soft jaws for standard columns. For long columns we can use standard soft jaws or special jaws on request.

MPT tipo ACS-I ACS-I MPT type		130	160	200	240	300
Numero colonne - Columns number		3	3	3	6	6
	A	40	40	60	60	60
	B	24	22	22	22	22
	C	20	23	23	23	23
	D	29.5	41	61.5	61.5	53
	E	3 x M6	3 x M8	3 x M8	6 x M8	6xM8
	F g6	4	4	4	4	4
	G	3	3	3	3	3
Diametri di bloccaggio consigliati Recommended clamping diameters	min	65**	92	110	144	210
	max	100	140	200	232	280
Codice set morsetti duri Hard jaws set code		69761360	69761660*	69762060*	69762490*	69763090*
Codice anello per tornitura griffe Ring for jaws turning code		69111360	69111660	69112060	69112490	69113090

* Intercambiabili sui 160-200-240-300
** Min. 60 con morsetti e viti particolari

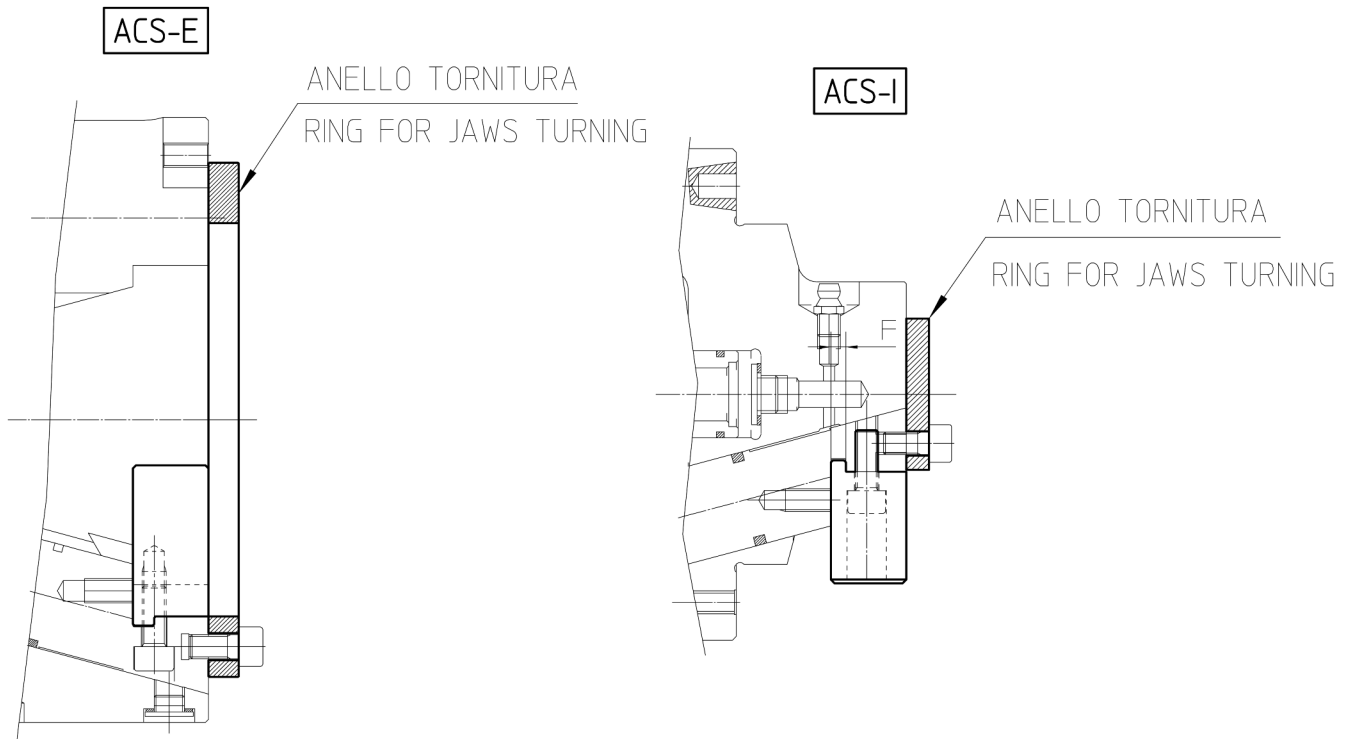
* Interchangeable on 160-200-240-300
** Min. 60 with special jaws and bolts

Anelli tornitura griffe

Ring for jaws turning

- 1) Bloccare l'anello sulle colonne con le apposite viti in dotazione con il kit.
 - 2) Azionare il cilindro di comando in tiro, in questo modo si eliminano i giochi tra le colonne e il corpo.
- (I fori passaggio viti sugli anelli di tornitura possono essere allargati a seconda delle esigenze)

- 1) Place the ring on the columns using the supplied screws
 - 2) Actuate the cylinder by pulling to eliminate the clearance between columns and chuck body
- (Note: the passage holes of the screws on the centering rings can be enlarged as needed)



Soggetto a cambiamenti tecnici - Subject to technical changes

ACS-E (3-6 colonne) - ACS-E (3-6 columns)

Tipo Type	110	130	145	170	200	220	260	320	350	450
Cod. Kit	69111110	69111310	69111410	69111710	69112040	69112240	69112540	69113240	69113540	69114540

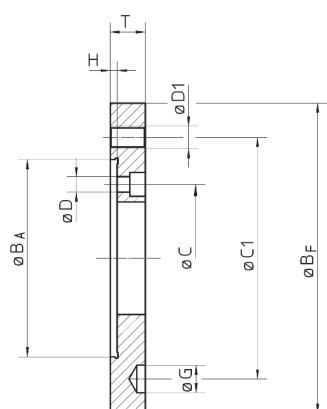
ACS-I (3-6 colonne) - ACS-I (3-6 columns)

Tipo Type	130	160	200	240	300					
Cod. Kit	69111360	69111660	69112060	69112490	69113090					

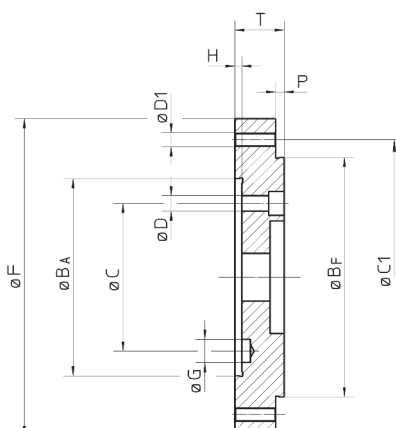
Flange attacco cilindrico

Plain back mounting adapters

Tipo 1 - type 1



Tipo 2 - type 2



Soggetto a cambiamenti tecnici - Subject to technical changes

Flangia tipo 1 - adapter type 1

Codice flangia Adapter code	Att. macchina BA Machine mtg. BA	BF	C	C1	D	D1	G	H	T
45047062	140	160	104.8	133.4	11	M12	16.5	5	25
45045230	140	170	104.8	133.4	11	M12	16.5	5	25
45045782	140	220	104.8	171.4	11	M16	19.5	5	25
45046026	220	300	171.4	235	17	M20	-	5	35
45047074	110	140	82.6	104.8	11	M10	-	5	23

Flangia tipo 2 - adapter type 2

Codice flangia Adapter code	Att. macchina BA Machine mtg. BA	BF	C	C1	D	D1	F	G	H	P	T
45046112	140	115	104.8	82.6	11	M10	150	-	5	6	26