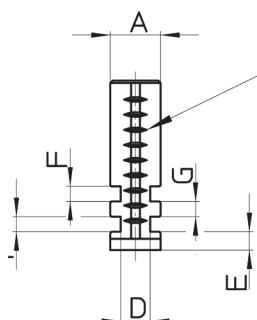
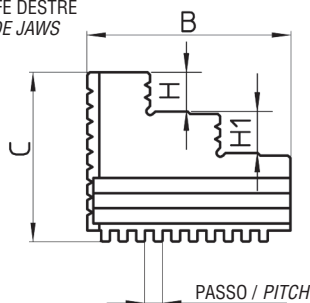


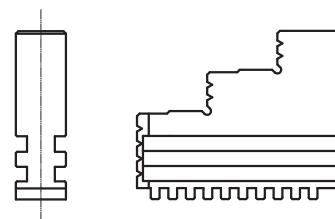
## DG/DGF-NUOVA PRODUZIONE / NEW PRODUCTION

GRIFFE DESTRE  
INSIDE JAWS



Le griffe DESTRE hanno la rigatura sul lato più lungo  
INSIDE jaws:  
Serration on the longer side

GRIFFE SINISTRE  
OUTSIDE JAWS



MPT tipo DG / Type DG		180	200	230	250	270	315	400	450	500	630
<b>Attacco / Mounting</b>	Dim	FL145	FL160	FL191	FL200	FL228	FL260	FL330	FL386	FL420	FL545
	A h6	20		22		28		36		46	
	B	81		95		108		145		190	
	C	67,1		77,7		87,2		101,5		129,2	
	D	11,1		11,6		15,6		24		29,5	
	E	7,2		10,2		9,7		12,5		15,2	
	F	6		7		8		9		11	
	G	6		7		8		9		11	
	H	15,5		17		20		24		30	
	H1	16,5		17		21,5		26		32	
	PASSO/PITCH	7		8		8		10		12	

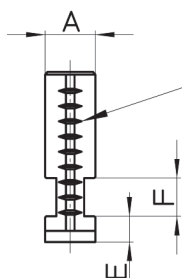
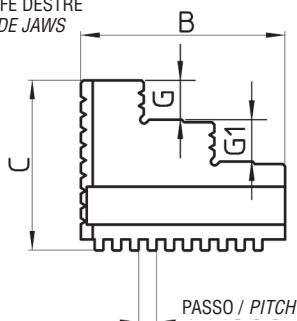
## DGG-VECCHIA PRODUZIONE / OLD PRODUCTION

MPT tipo DGG / Type DGG		200	230	250	270	310	350	380	430	510	600
<b>Attacco / Mounting</b>	Dim	FL162	FL191	FL210	FL228	FL268	FL308	FL333	FL386	FL460	FL542
	A				25			30		40	
	B	Uguale	Uguale	Uguale	102,5	Uguale		127,5	170	180	200
	C	al DG200	al DG230	al DG250	86,7	al DG315		99,7		110,2	
	D				14,5			19	25	27	31
	E	Same as DG200	Same as DG230	Same as DG250	9,2	Same as DG315		12,2	Uguale	15,2	Uguale
	F	DG200	DG230	DG250	8	DG315		8	al DG400*	10	al DG630*
	G				8			8	Same as DG400*	10	Same as DG630*
	PASSO/PITCH				8			8	DG400*	12	DG630*

\* Varia solo per le quote indicate / Only the indicated dimensions change

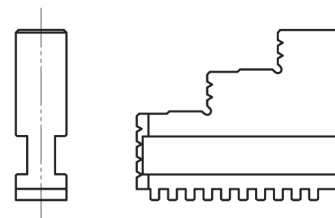
## SGS-SGSF

GRIFFE DESTRE  
INSIDE JAWS



Le griffe DESTRE hanno la rigatura sul lato più lungo  
INSIDE jaws:  
Serration on the longer side

GRIFFE SINISTRE  
OUTSIDE JAWS



SMW tipo SGS-SGSF / Type SGS-SGSF		80-16	100-20	125-35	160-42	200-55	250-76	315-103	400-136	500-190	630-252
<b>Attacco / Mounting</b>	Dim	FL56	FL70	FL95	FL125	FL160	FL200	FL260	FL330	FL420	FL545
	A	11	15	20	20	25	28	32	36	40	50
	B	32	42	51	70	85	105	125	145	180	225
	C	28	32	40	53	54	63	73	92	100	110
	E	6	6	8	8	9	11	12,7	15	16	16
	F	6	6	8	8	10	12	12	14	14	14
	G	6	7	8	10	12	14	18	22	26	28
	G1	6	7	8	10	12	14	18	22	26	28
	PASSO/PITCH	4	8	7	8	8	9	10	12	14	14