

Pinze in acciaio zigurate (*lisce = dentatura non possibile, **solo con cave radiali = cave assiali non possibili)
Steel collets with axial and radial grooves (*smooth, **radial grooves)

ROTONDE - ROUND ●													
Ø	4*	5*	6*	7*	8**	9**	10**	11	12	13	14	15	16
Code	192173	192174	192175	192176	192177	192178	192179	192180	192181	192182	192183	192184	192185
Ø	17	18	19	20	21	22	23	24	25	26	27	28	29
Code	192186	192187	192188	192189	192190	192191	192192	192193	192194	192195	192196	192197	192198
Ø	30	31	32	33	34	35	36	37	38	39	40	41	42
Code	192199	192200	192201	192202	192203	192204	192205	192206	192207	192208	192209	192210	192211

Pinze in acciaio lisce
Smooth steel collets

ROTONDE - ROUND ●													
Ø	4	5	6	7	8	9	10	11	12	13	14	15	16
Code	192173	192174	192175	192176	193135	193136	193137	193138	193139	193140	193141	193142	193143
Ø	17	18	19	20	21	22	23	24	25	26	27	28	29
Code	193144	192807	193145	192808	193146	193147	193148	193149	193150	193151	193152	193153	193154
Ø	30	31	32	33	34	35	36	37	38	39	40	41	42
Code	193155	193156	193083	193157	193158	193159	193160	193161	193162	193163	193164	193165	193219

QUADRATE - SQUARE ▲													
□	7*	8**	9**	10**	11**	12**	13**	14**	15**	16**	17**	18**	19**
Code	192212	192213	192214	192215	192216	192217	192218	192219	192220	192221	192222	192223	192224
□	20**	21**	22**	23**	24**	25**	26**	27**	28**	29**	30**		
Code	192225	192226	192227	192228	192229	192230	192231	192232	192233	192234	192235		

ESAGONALI - HEXAGONAL ▲													
⬡	7*	8**	9**	10**	11**	12**	13**	14**	15**	16**	17**	18**	19**
Code	192236	192237	192238	192239	192240	192241	192242	192243	192244	192245	192246	192247	192248
⬡	20**	21**	22**	23**	24**	25**	26**	27**	28**	29**	30**	31**	32**
Code	192249	192250	192251	192252	192253	192254	192255	192256	192257	192258	192259	192260	192261

Pinze in acciaio tenero tornibile (pre-forate)
Soft steel collets (pre-bored)

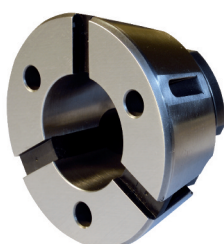
ROTONDE - ROUND			
Ø	5	15	30
Code	192262	192263	192264

Anello di tornitura 42 per pinze in acciaio tenero tornibile
Boring ring 42 for soft steel collets

Codice/Code 193399

Attrezzo cambio pinza gr 42
Collet changing unit size 42

MANUALE / MANUAL: Codice/Code 00196842



● Precisione di concentricità secondo la DIN6343 / Concentricity similar DIN6343
▲ Precisione di concentricità non garantita / concentricity has to be agreed

Pinze in acciaio zigrinate (*lisce = dentatura non possibile, **solo con cave radiali = cave assiali non possibili)

Steel collets with axial and radial grooves (*smooth, **radial grooves)

ROTONDE - ROUND ●													
Ø	5*	6*	7*	8**	9**	10**	11	12	13	14	15	16	17
Code	192265	192266	196667	192268	192269	192270	192271	192272	192273	192274	192275	192276	192277
Ø	18	19	20	21	22	23	24	25	26	27	28	29	30
Code	192278	192279	192280	192281	192282	192283	192284	192285	192286	192287	192288	192289	192290
Ø	31	32	33	34	35	36	37	38	39	40	41	42	43
Code	192291	192292	192293	192294	192295	192296	192297	192298	192299	192300	192301	192302	192303
Ø	44	45	46	47	48	49	50	51	52	53	54	55	56
Code	192304	192305	192306	192307	192308	192309	192310	192311	192312	192313	192314	192315	192316
Ø	57	58	59	60	61	62	63	64	65				
Code	192317	192318	192319	192320	192321	192322	192323	192324	192325				

Pinze in acciaio lisce

Smooth steel collets

ROTONDE - ROUND ●													
Ø	5	6	7	8	9	10	11	12	13	14	15	16	17
Code	192265	192266	192267	193172	193173	192682	193174	192787	193175	193176	193177	193169	193178
Ø	18	19	20	21	22	23	24	25	26	27	28	29	30
Code	193179	193180	193181	193182	192683	193183	193170	193065	193184	193066	193068	193069	193070
Ø	31	32	33	34	35	36	37	38	39	40	41	42	43
Code	193185	192684	193186	193187	193188	193189	193190	193191	193192	192685	193193	193194	193171
Ø	44	45	46	47	48	49	50	51	52	53	54	55	56
Code	193196	193197	193198	193199	193200	193201	193202	193203	193204	193205	193206	193207	193208
Ø	57	58	59	60	61	62	63	64	65				
Code	193195	193209	193210	193211	193212	193213	193214	193215	193216				

QUADRATE - SQUARE ▲													
□	8**	9**	10**	11**	12**	13**	14**	15**	16**	17**	18**	19**	20**
Code	192326	192327	192328	192329	192330	192331	192332	192333	192334	192335	192336	192337	192338
□	21**	22**	23**	24**	25**	26**	27**	28**	29**	30**	31**	32**	33**
Code	192339	192340	192341	192342	192343	192344	192345	192346	192347	192348	192349	192350	192351
□	34**	35**	36**	37**	38**	39**	40**	41**	42**	43**	44**	45**	46**
Code	192352	192353	192354	192355	192356	192357	192358	192359	192360	192361	192362	192363	192363

ESAGONALI - HEXAGONAL ▲													
⬡	10**	11**	12**	13**	14**	15**	16**	17**	18**	19**	20**	21**	22**
Code	192365	192366	192367	192368	192369	192370	192371	192372	192373	192374	192375	192376	192377
⬡	23**	24**	25**	26**	27**	28**	29**	30**	31**	32**	33**	34**	35**
Code	192378	192379	192380	192381	192382	192383	192384	192385	192386	192387	192388	192389	192390
⬡	36**	37**	38**	39**	40**	41**	42**	43**	44**	45**	46**	47**	48**
Code	192391	192392	192393	192394	192395	192396	192397	192398	192399	192400	192401	192402	192403
⬡	49**	50**											
Code	192404	192405											

Pinze in acciaio tenero tornibile (pre-forate)

Soft steel collets (pre-bored)

ROTONDE - ROUND			
Ø	8	20	40
Code	192406	192407	192408

Anello di tornitura 65 per pinze in acciaio tenero tornibile
Boring ring 65 for soft steel collets

Codice/Code 193400

Attrezzo cambio pinza gr 65
Collet changing unit size 65

MANUALE / MANUAL: Codice/Code 00196844



Pinze in acciaio zigrinate

Steel collets with axial and radial grooves

ROTONDE - ROUND ●													
Ø	15	16	17	18	19	20	21	22	23	24	25	26	27
Code	74332815	74332816	74332817	74332818	74332819	74332820	74332821	74332822	74332823	74332824	74332825	74332826	74332827
Ø	28	29	30	31	32	33	34	35	36	37	38	39	40
Code	74332828	74332829	74332830	74332831	74332832	74332833	74332834	74332835	74332836	74332837	74332838	74332839	74332840
Ø	41	42	43	44	45	46	47	48	49	50	51	52	53
Code	74332841	74332842	74332843	74332844	74332845	74332846	74332847	74332848	74332849	74332850	74332851	74332852	74332853
Ø	54	55	56	57	58	59	60	61	62	63	64	65	66
Code	74332854	74332855	74332856	74332857	74332858	74332859	74332860	74332861	74332862	74332863	74332864	74332865	74332866
Ø	67	68	69	70	71	72	73	74	75	76	77	78	79
Code	74332867	74332868	74332869	74332870	74332871	74332872	74332873	74332874	74332875	74332876	74332877	74332878	74332879
Ø	80												
Code	74332880												

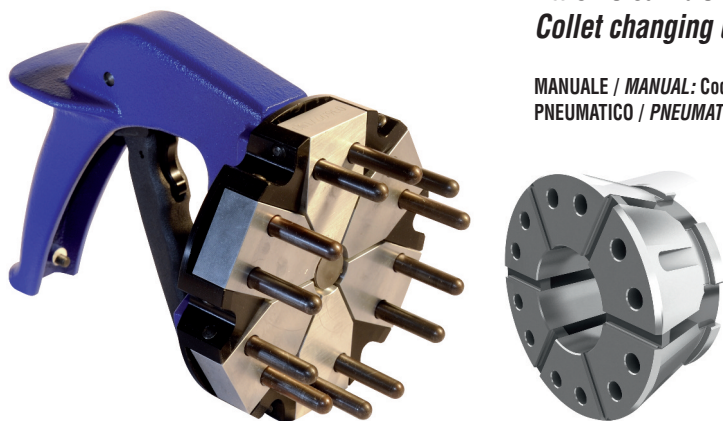
Pinze in acciaio lisce

Smooth steel collets

ROTONDE - ROUND ●													
Ø	15	16	17	18	19	20	21	22	23	24	25	26	27
Code	74335815	74335816	74335817	74335818	74335819	74335820	74335821	74335822	74335823	74335824	74335825	74335826	74335827
Ø	28	29	30	31	32	33	34	35	36	37	38	39	40
Code	74335828	74335829	74335830	74335831	74335832	74335833	74335834	74335835	74335836	74335837	74335838	74335839	74335840
Ø	41	42	43	44	45	46	47	48	49	50	51	52	53
Code	74335841	74335842	74335843	74335844	74335845	74335846	74335847	74335848	74335849	74335850	74335851	74335852	74335853
Ø	54	55	56	57	58	59	60	61	62	63	64	65	66
Code	74335854	74335855	74335856	74335857	74335858	74335859	74335860	74335861	74335862	74335863	74335864	74335865	74335866
Ø	67	68	69	70	71	72	73	74	75	76	77	78	79
Code	74335867	74335868	74335869	74335870	74335871	74335872	74335873	74335874	74335875	74335876	74335877	74335878	74335879
Ø	80												
Code	74335880												

Attrezzo cambio pinza gr 80 Collet changing unit size 80

MANUALE / MANUAL: Codice/Code 01863597 (6 settori/6 sectors)
PNEUMATICO / PNEUMATIC: a richiesta/on request



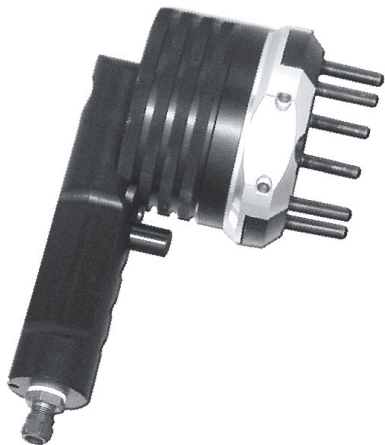
● Precisione di concentricità secondo la DIN6343 / Concentricity similar DIN6343

Pinze in acciaio zigrinate con dentatura quadra Steel collets with axial and radial grooves

ROTONDE - ROUND ●													
Ø	40	41	42	43	44	45	46	47	48	49	50	51	52
Code	195076	195080	195081	195082	195083	195084	195085	195086	195087	195088	195089	195090	195091
Ø	53	54	55	56	57	58	59	60	61	62	63	64	65
Code	195092	195093	195094	195095	195096	195097	195098	195099	195100	195101	195102	195103	195104
Ø	66	67	68	69	70	71	72	73	74	75	76	77	78
Code	195105	195106	195107	195108	195109	195110	195111	195112	195113	195114	195115	195116	195117
Ø	79	80	81	82	83	84	85	86	87	88	89	90	91
Code	195118	195119	195120	195121	195122	195123	195124	195125	195126	195127	195128	195129	195130
Ø	92	93	94	95	96	97	98	99	100				
Code	195131	195132	195133	195134	195135	195136	195137	195138	194742				

Pinze in acciaio lisce Smooth steel collets

ROTONDE - ROUND ●													
Ø	40	41	42	43	44	45	46	47	48	49	50	51	52
Code	195139	195140	195141	195142	195143	195144	195145	195146	195147	195148	195149	195150	195151
Ø	53	54	55	59	57	58	59	60	61	62	63	64	65
Code	195152	195153	195154	195155	195156	195157	195158	195159	195160	195161	195162	195163	195164
Ø	66	67	68	69	70	71	72	73	74	75	76	77	78
Code	195165	195166	195167	195168	195169	195170	195171	195172	195173	195174	195175	195176	195177
Ø	79	80	81	82	83	84	85	86	87	88	89	90	91
Code	195178	195179	195180	195181	195182	195183	195184	195185	195186	195187	195188	194743	195189
Ø	92	93	94	95	96	97	98	99	100				
Code	195190	195191	195192	195193	195194	195195	195196	195197	195198				



Attrezzo cambio pinza gr 100 Collet changing unit size 100

MANUALE / MANUAL: non disponibile/not available
PNEUMATICO / PNEUMATIC: Codice/Code 194744



● Precisione di concentricità secondo la DIN6343 / Concentricity similar DIN6343