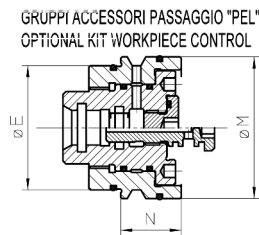
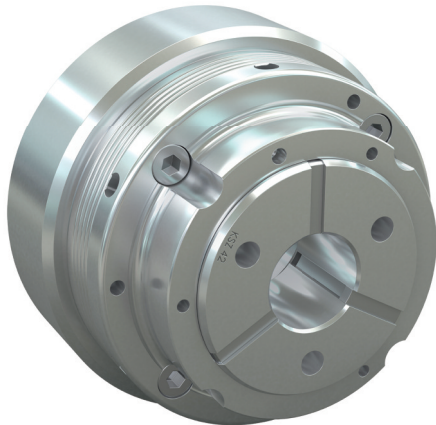
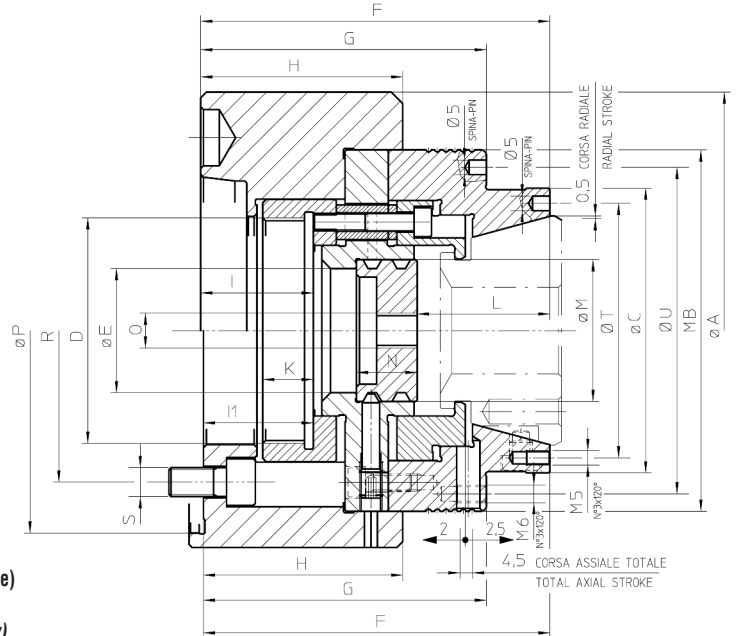


• Attuazione a trazione  
Pull-to-close style

• Ricambio rapido delle pinze  
Quick collet change



**IN DOTAZIONE:** Mandrino e viti di fissaggio  
(pinze da ordinare separatamente)  
**EQUIPMENT:** Chuck and fixing screws  
(collets to be ordered separately)



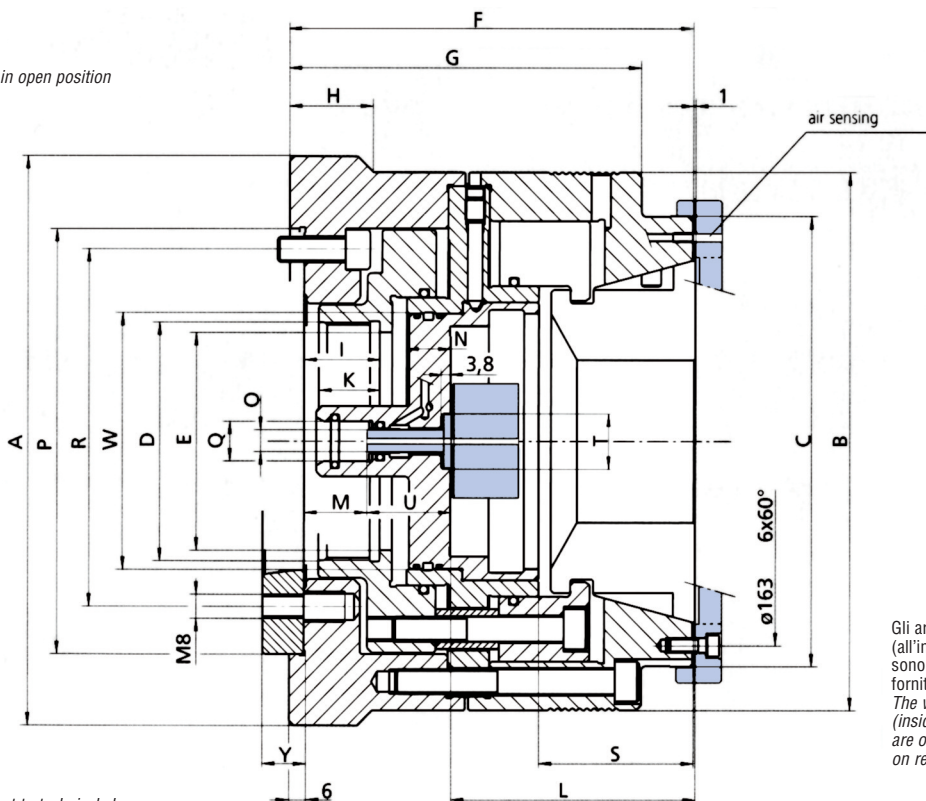
Soggetto a cambiamenti tecnici - Subject to technical changes

Modello MPT - MPT model	KSZ-AZ 42			KSZ-AZ 65					KSZ-AZ 80	
Attacco naso macchina - Machine spindle	FL140	A5	A6	FL140	FL170	A5	A6	A8	FL170	
Codice - Code	77687942	77688142	77688242	77687965	77688065	77688165	77688265	77688365	77687980	
A	150	140	165	150	185	155	165	220	185	
B		125				145			165	
C		98.5				120			140	
D		M78x1.5				M78x1.5			M94x1.5	
E		43				66			81	
F	120		121	130	124		130		145	
G	98		99	100	94		100		135	
H	69		70	50.5	44.5		50.5		64	
Min-Max			37-41.5				37-41.5		42-46.5	
Min-Max	I1	36-40.5		37-41.5	31-35.5				42-46.5	
	K		17.5			17.5			18	
	L		46			55			60.5	
	M <sub>06</sub>		49			72			87	
	N		21			22.5			22.5	
	O		M12			M12			M12	
	P <sub>H6</sub>	140		140	170				170	
	R	104.8	104.8	133.4	104.8	133.4	104.8	133.4	171.4	
	S	3xM10	4xM10	4xM12	6xM10	6xM12	6xM10	6xM12	4xM16	
	T		88			110			125	
	U		113			133.4			154	
Velocità massima - Max. speed	r.p.m.	7000			6000					5500
Forza assiale max. - Max. axial force	kN	35			45					50
Forza di serraggio max. - Max clamping force	kN	80			105					115
Massa (senza pinza) - Mass (without collet)	Kg	7.8	7.2	8.5	-	18.8	12.9	15.4	20.4	16

Cilindri consigliati - Recomm. cylinders	Tipo	VNK-T2 102-46	VNK-T2 102-46	VNK-T2 102-46	VNK-T2 150-67	VNK-T2 150-67	VNK-T2 150-67	VNK-T2 150-67	VNK-T2 150-67	VNK-T2 200-86
Vel. max del cilindro - Max. cylinder speed	r.p.m.	7000	7000	7000	5500	5500	5500	5500	5500	4500

Attrezzo di ricambio - Changing unit	KSZ-AZ 42			KSZ-AZ 65					KSZ-AZ 80
Accessori - Accessories									
Manuale - Manual	00196842			00196844					01863597
Pneumatico - Pneumatic	01866500			01866599					
Gruppi accessori passaggio "PEL" Optional kit workpiece control	01860599			01860598					01860597

Posizione aperta - Chuck in open position



Gli arresti contrassegnati in verde (all'interno della parte frontale) sono optional e possono essere forniti su richiesta.  
The workstops illustrated in green (inside or on the front side) are optional and can be delivered on request.

Soggetto a cambiamenti tecnici - Subject to technical changes

Modello MPT - MPT model		KSZ-AZ 100			
Attacco - Mounting		Z170	Z220	A6	A8
Codice - Code		194741	195244	194783	195245
A		215	230	215	230
B		-	215	-	230
C		180	180	180	180
D		M95x2	M115x2	M95x2	M115x2
E		87	107	87	107
F		165	165	176	178
G		144	144	155	157
H		-	37	-	37
I		-	-	53	55
Ii		36	36		
K		25	25	25	25
L		99	99	99	99
M		25	25	25	25
N		17	17	17	17
O		M12	M12	M12	M12
PH6		170	220		
R		133.4 6x60° M12	171.4 6x60° M16	133.4 6x60° M12	171.4 6x60° M16
S		63	63	63	63
T		22	22	22	22
U		34.3	34.3	34.3	34.3
V		M12	M12	M12	M12
W		87	107	87	107
X		111	111	111	111
Y		-	-	17	19
Velocità massima - Max. speed		r.p.m. 3800	3800	3800	3800
Forza assiale max. - Max. actuating force		daN 6500	6500	6500	6500
Forza di serraggio max. - Max clamping force		daN 8500	8500	8500	8500
Massa (senza pinza) - Mass (without collet)		Kg 33	35	34	36

Cilindri consigliati - Recomm. cylinders	Tipo	VNK-T2 200-86	VNK-T2 225-95/VNK 250-110	VNK-T2 200-86	VNK-T2 225-95/VNK 250-110
Vel. max del cilindro - Max. cylinder speed	r.p.m.	4500	400/3600	4500	4000/3600

Attrezzo di ricambio - Changing unit	KSZ-AZ			
Accessori - Accessories				
Manuale - Manual				
Pneumatico - Pneumatic	194744			