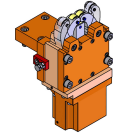


# 05418000 - LUNETTA D55 D5-60 SLU-1-M H114

Type	STEADY REST Self-centering steady rest for turret
Mounting	CYLINDRICAL SHANK 55
Tool output	Gripping jaws Ø5-Ø60
Coolant	N.A.
H [mm]	114
Ø Min [mm]	5
Ø Max [mm]	60
Max pressure [bar]	14
Accessories	N.A.
Notes	N.A.
Mounting tips	Not suitable for every application, please check



Always check live tool dimensions on the turret

Technical drawing showing front, side, and bottom views of the steady rest. Dimensions include: front view (total height 247, mounting height 114, width 142, jaw opening 60 max. / 5 min.), side view (total height 247, mounting height 114, base width 175, jaw offset 52.5 and 74), and bottom view (width 194.6, jaw offset 50).

Two graphs showing force vs. displacement for the spring system. The left graph shows force (N) vs. displacement (mm) for the D-313W spring, and the right graph shows force (N) vs. displacement (mm) for the D-313G spring.

**ATTENZIONE :**  
**APERTURA A MOLLA**  
**CHIUSURA CON LIQUIDO REFRIGERANTE**  
 il liquido refrigerante deve essere filtrato  
 min. 0,03 - max. 0,05

**ATTENZIONE :**  
**OPENING THROUGH SPRING SYSTEM**  
**CLOSING THROUGH COOLANT SYSTEM**  
 The Coolant must be filtered min. 0,03 -  
 max. 0,05

DATE/DATE: 15/02/2022

**05418000-R011**

Subject to technical changes