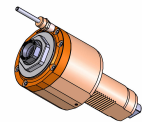


05230200 - LT-S VDI50 ER32F H95

Type	LT-S Tool holder straight
Mounting	VDI 50
Tool output	Collet nut ER 32 F - internal nut
Coolant	External coolant
Direction of rotation	r1 r2
Max speed [rpm]	6000
Max torque [Nm]	100
Ratio	1:1
H [mm]	95
Accessories	N.A.
Notes	N.A.
Mounting tips	Not suitable for every application, please check



ATTENZIONE: VERIFICARE L'ORIENTAMENTO DELLA DENTATURA VDI

Always check live tool dimensions on the turret

USCITA LIQUIDO REFRIGERANTE
COOLANT WAY-OUT

Dimensions: M40x1,5, $\varnothing 32$, 9, 12, 40, $\varnothing 23,5$, 95, $\varnothing 100$, 115, $\varnothing 50$.

Dimensions: Ch. 32, Ch. 50.

DATE/GRA	05230200-R011
28/02/2017	

Subject to technical changes